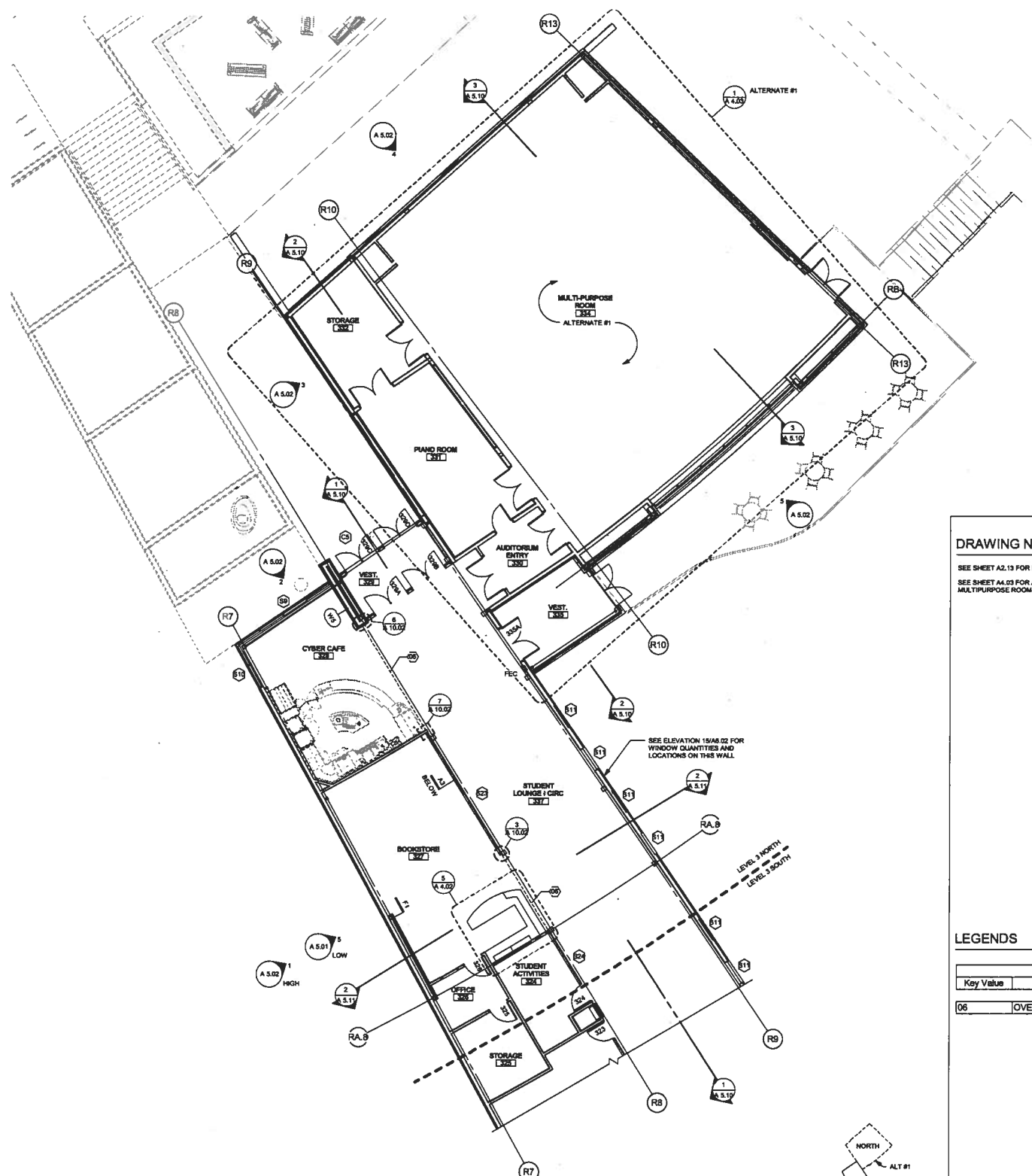


2 3 FLOOR PLAN - NORTH (ALTERNATE)  
1/8" = 1'-0"



1 LEVEL 3 FLOOR PLAN - NORTH (BASE BID) KEY PLAN LEVEL 3  
1/8" = 1'-0"

**DRAWING NOTES**  
SEE SHEET A2.13 FOR LEVEL 3 DIMENSION PLAN  
SEE SHEET A4.03 FOR ADDITIONAL INFORMATION ON THE MULTI-PURPOSE ROOM

**LEGENDS**

KEYNOTE LEGEND	
Key Value	Keynote Text
06	OVERHEAD COILING GRILL

- 4L**  
1755 Blake Street, Suite 400  
DENVER, COLORADO 80202  
(7) 303.292.8437 (p) 303.298.4700
- ASSOCIATE ARCHITECT**  
Thru Incorporated  
1820 Bridge Lane #8  
Steamboat Springs, CO 80477  
(7) 970.878.1037 (p) 970.871.9041
- CIVIL ENGINEER**  
Civil Design Consultants, Inc.  
2148 Ramart Drive, Suite 100  
Steamboat, CO 80487  
(p) 970.878.3622
- LANDSCAPE ARCHITECT**  
H&L Architects  
1755 Blake Street, Suite 400  
Denver, CO 80202  
(7) 303.292.8437 (p) 303.298.4700
- LANDSCAPE CONSULTANT**  
MGC Design, Inc.  
2148 Ramart Drive, Suite 215  
Steamboat Springs, CO 80487  
(p) 970.878.7740
- STRUCTURAL ENGINEER**  
Morris & Howell Engineers, Inc.  
70 Benchmark Road, Suite 204  
Aven, CO 81820  
(p) 970.845.7788
- MECHANICAL/ELECTRICAL ENGINEER**  
Cator Runa & Associates  
898 Tabor Street  
Lafayette, CO 80401-4700  
(7) 303.233.3701 (p) 303.232.8200
- ELECTRICAL ENGINEER**  
Cator Runa & Associates  
898 Tabor Street  
Lafayette, CO 80401-4700  
(7) 303.233.3701 (p) 303.232.8200
- ACoustical CONSULTANT**  
D.L. Adams Associates, Inc.  
1701 Boulder Street  
Denver, CO 80211  
(p) 303.455.1900
- IT / AV CONSULTANT**  
Riverview Group, Inc.  
10807 New Albemarle Drive, Suite 400  
Colorado Springs, CO 80921  
(7) 718.533.1113 (p) 718.533.1112
- FOOD SERVICE CONSULTANT**  
Systems Design International  
5300 DTC Pkwy, Suite 500  
Greenwood Village, CO 80111  
(7) 303.771.0058 (p) 303.771.0054

**COLORADO MOUNTAIN COLLEGE  
ALPINE CAMPUS CENTER**  
1330 Bob Adams Drive Steamboat Springs, CO 80487



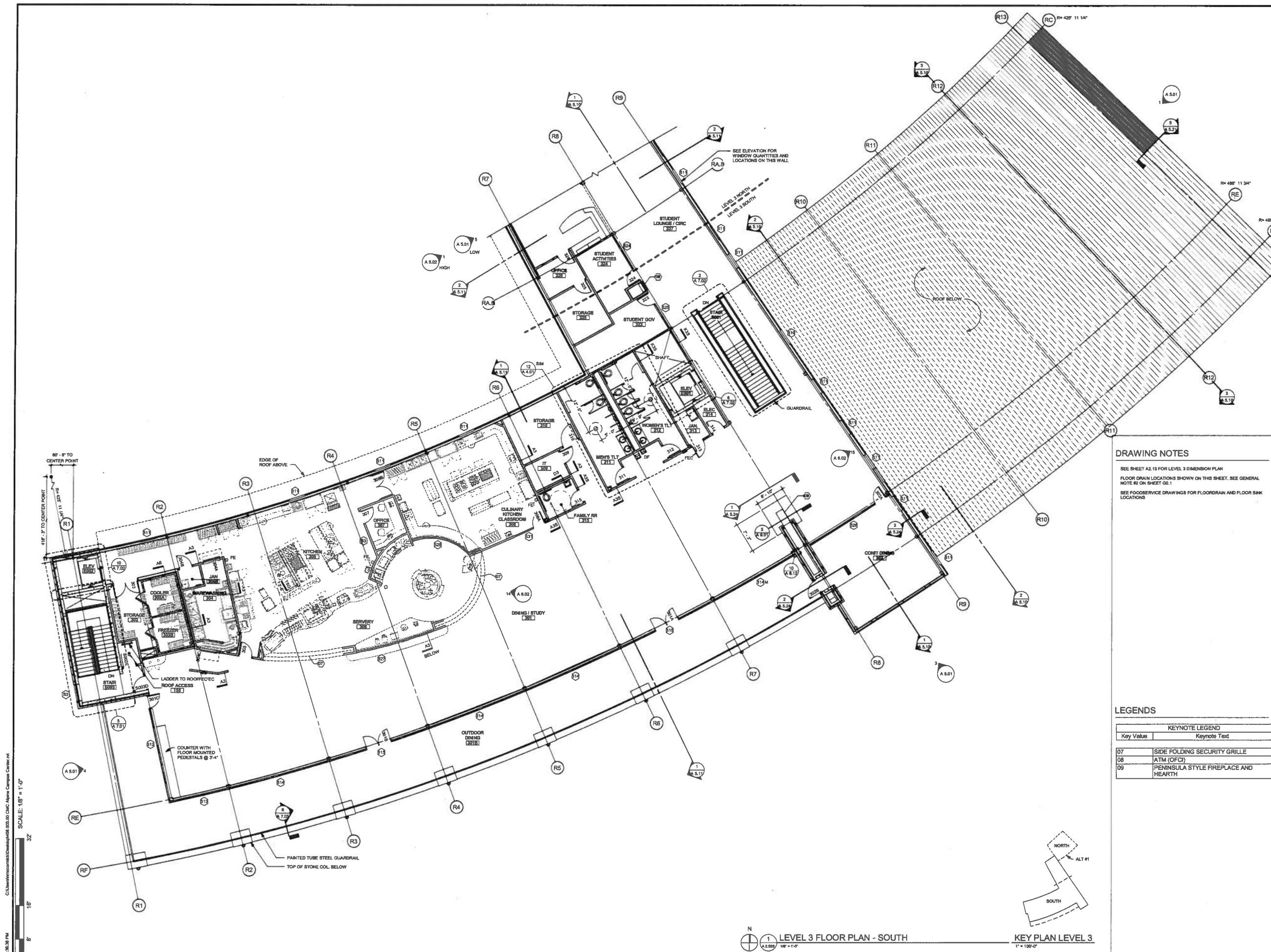
This document is the intellectual property of the author and is not to be distributed, copied, or reproduced in any form without the express written consent of the author. The author assumes no responsibility for any errors or omissions in this document. The user of this document is advised to verify the accuracy of the information contained herein.

Project Number: 408.003  
Issued For: CONSTRUCTION DOCS  
Date: MARCH 25, 2011

Revision	Date

LEVEL 3 NORTH  
FLOOR PLAN  
**A**  
**2.03N**

3/20/2011 1:36:52 PM C:\Users\mccadmin\Documents\408.003.00.CAC.Alpine Campus Center.rvt SCALE: 1/8" = 1'-0"  
0 4' 8' 16' 32'

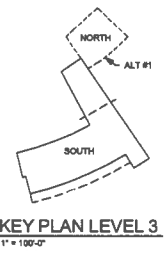


SCALE: 1/8" = 1'-0"  
 0' 4' 8' 16' 32'

**DRAWING NOTES**  
 SEE SHEET A2.13 FOR LEVEL 3 DIMENSION PLAN  
 FLOOR DRAIN LOCATIONS SHOWN ON THIS SHEET. SEE GENERAL NOTE R2 ON SHEET 02.1  
 SEE FOODSERVICE DRAWINGS FOR FLOOR DRAIN AND FLOOR SINK LOCATIONS

**LEGENDS**

KEYNOTE LEGEND	
Key Value	Keynote Text
07	SIDE FOLDING SECURITY GRILLE
08	ATM (OFC)
09	PENINSULA STYLE FIREPLACE AND HEARTH



**LEVEL 3 FLOOR PLAN - SOUTH**  
 1/8" = 1'-0"



**H&L Architects**  
 1755 Blaine Street, Suite 400  
 Steamboat Springs, CO 80487  
 (770) 878-1037 (p) 870.871.8041

**ASSOCIATE ARCHITECT**  
 This Incorporated  
 1520 Bridge Lane 48  
 Steamboat Springs, CO 80477  
 (770) 878-1037 (p) 870.871.8041

**CIVIL ENGINEER**  
 This Incorporated  
 2145 Resort Drive, Suite 100  
 Steamboat Springs, CO 80487  
 (p) 870.878.2022

**LANDSCAPE ARCHITECT**  
 H.L. Architecture  
 1755 Blaine Street, Suite 400  
 Steamboat Springs, CO 80487  
 (770) 878-1037 (p) 870.871.8041

**LANDSCAPE CONSULTANT**  
 MJC Design, Inc.  
 2145 Resort Drive, Suite 215  
 Steamboat Springs, CO 80487  
 (p) 870.878.2746

**STRUCTURAL ENGINEER**  
 Horvath & Horvath Engineers, Inc.  
 70 Benchmark Road, Suite 204  
 Avon, CO 81620  
 (p) 870.848.7768

**MECHANICAL/PLUMBING ENGINEER**  
 Color Rums & Associates  
 898 Taber Street  
 Lakewood, CO 80401-4700  
 (770) 303.233.3701 (p) 303.232.8200

**ELECTRICAL ENGINEER**  
 Color Rums & Associates  
 898 Taber Street  
 Lakewood, CO 80401-4700  
 (770) 303.233.3701 (p) 303.232.8200

**ACOUSTICAL CONSULTANT**  
 D.L. Adams Associates, Inc.  
 1701 Boulder Street  
 Denver, CO 80211  
 (p) 303.456.1900

**IT / AV CONSULTANT**  
 Rymond Group, Inc.  
 10807 New Alpenglow Drive, Suite 400  
 Colorado Springs, CO 80921  
 (770) 718.523.1113 (p) 718.523.1112

**POOD SERVICE CONSULTANT**  
 Systems Design International  
 5200 DTC Pkwy, Suite 500  
 Greenwood Village, CO 80111  
 (770) 303.771.0868 (p) 303.771.0034

**COLORADO MOUNTAIN COLLEGE  
 ALPINE CAMPUS CENTER**  
 1330 Bob Adams Drive Steamboat Springs, CO 80487



This drawing is the property of H&L Architects. The copyright in this drawing and the information contained herein shall not be used, reproduced, copied, or otherwise disseminated without the written consent of H&L Architects. H&L Architects is not responsible for any errors or omissions in this drawing or for any consequences arising from its use. H&L Architects is not responsible for any errors or omissions in any other drawings or documents prepared by or for the project, including those prepared by or for the project, including those prepared by or for the project, including those prepared by or for the project.

Project Number: 408.003  
 Issued For: CONSTRUCTION DOCS  
 Date: MARCH 25, 2011

Revision	Date

**LEVEL 3 SOUTH  
 FLOOR PLAN**  
**A  
 2.03S**