

Fixture Schedule

SHOWER	ADA TRANSFER SHOWER ACCESSIBILITY PROFESSIONALS: APES3637EP THREE PIECE, SMOOTH WALL :: 40.25" X 38.75" GRAB BARS, SHOWER PRESSURE MIXING VALVE, HANDHELD SHOWER HEAD GLIDE BAR, HEAVY DUTY SHOWER CURTAIN AND ROD, SEAT, THRESHOLD RAMP PREMANUFACTURED SHOWER STALL THREE PIECE, SMOOTH WALL :: 40" X 39" PROVIDE SUBMITTAL FOR APPROVAL
WATER CLOSET	KOHLER HIGHCLIFF K-4368, FLOOR MOUNTED, WHITE VITREOUS CHINA, ELONGATED, SIPHON LET, KOHLER FLUSHMETER K-10957 DUAL FLUSH VALVE, 1.6 GPF/6.0 LPF, LUSTRA SEAT
URINAL	ZURN Z5798 WALL MOUNTED, WHITE VITREOUS CHINA, WATER SAVER, WITH ZEG6003AV INTRA RED FLUSH VALVE, TOP SPUD, 0.12 GPF, WADE W-400 CARRIER
UNDERMOUNT SINK	KOHLER: BACHATA, K-2609
FAUCET	KOHLER: TOUCHLESS AC-POWERED ELECTRONIC FAUCET K-10951-4
ACCESSORIES	TOILET TISSUE DISPENSER: GEORGIA PACIFIC: 56746
	TOWEL DISPENSER: GEORGIA PACIFIC: 59466
	WASTE RECEPTACLE: GEORGIA PACIFIC: 59471
	SOAP DISPENSER: GEORGIA PACIFIC: 53254
	AIR FRESHNER: GEORGIA PACIFIC: 53238
	NAPKIN/TAMPON VENDOR: BOBRICK: B-3500
	NAPKIN DISPOSAL: BOBRICK: B-354
	CLOTHES HOOK : BOBRICK: B-233
	ADA WASTE PIPE GUARD: BOBRICK
LIGHT FIXTURE	VISA LIGHTING: ASTA CB6508 47-1/2"

Fixture Notes

1. ALL FIXTURES TO BE REMOVED AND REPLACED IN EXISTING LOCATIONS UNLESS OTHERWISE NOTED.
2. ALL TOILET PARTITION DOORS TO HAVE A CLOTHES HOOK INSTALLED AT ADA HEIGHT.
3. WRAP ALL EXPOSED LAVATORY WASTE PIPES WITH PLUMBING GUARD.
4. INSTALL ALL FIXTURES ACCESSORIES PER MANUFACTURERS RECOMMENDATIONS AND ICC/ANSI 117.1-2003.
5. REPLACE AND INSTALL ALL NEW WALL MOUNTED LIGHT FIXTURES INCLUDING CEILING MOUNTED LIGHT FIXTURES ON FIRST FLOOR SHOWER/LOCKER ROOM.

Key Demolition Notes

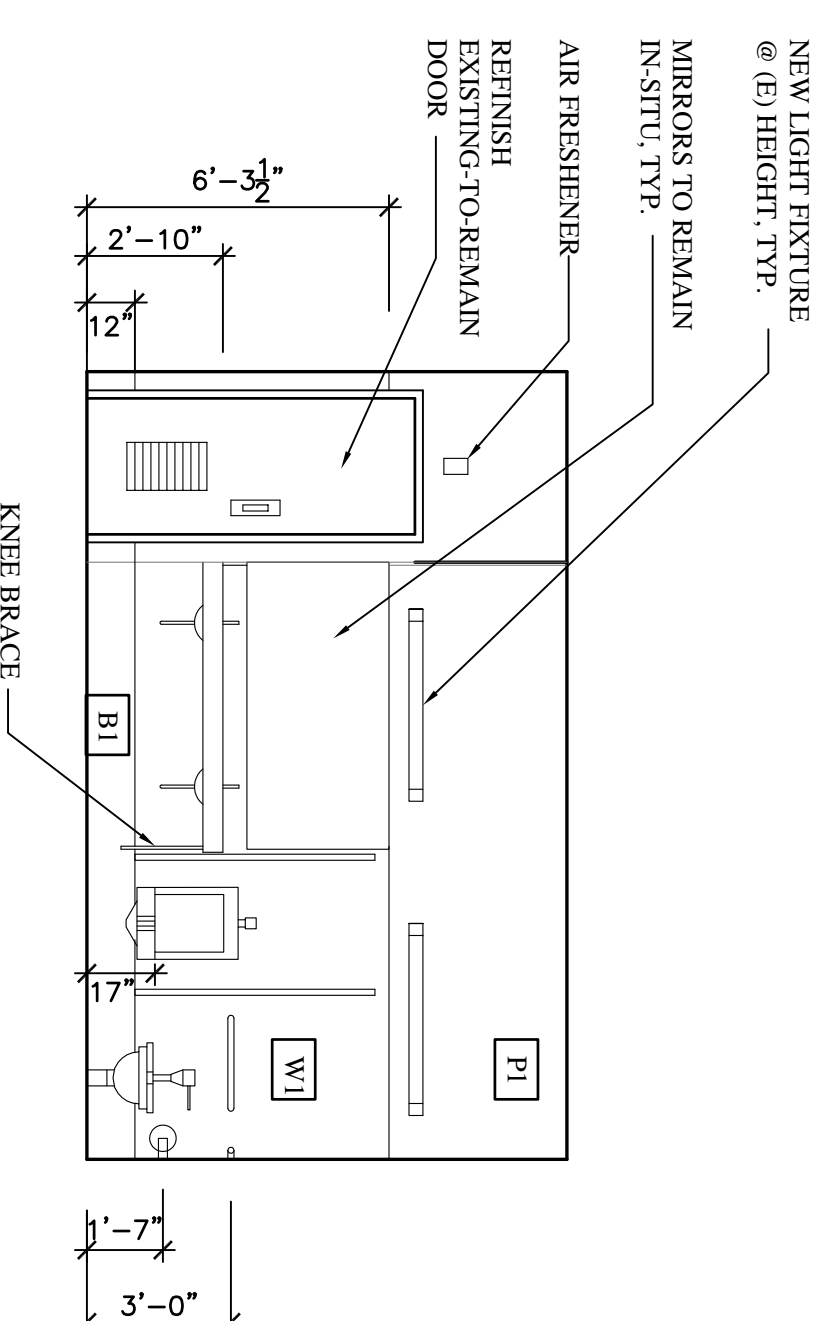
REFER TO SHEET A2.0 FOR GENERAL DEMOLITION NOTES.

- 1 REMOVE EXISTING WALL PARTITION IN PREPARATION OF NEW COUNTER.
- 2 RELOCATE NEW URINAL AT EXISTING (SECOND) WATER CLOSET LOCATION- DELETE ONE WATER CLOSET.

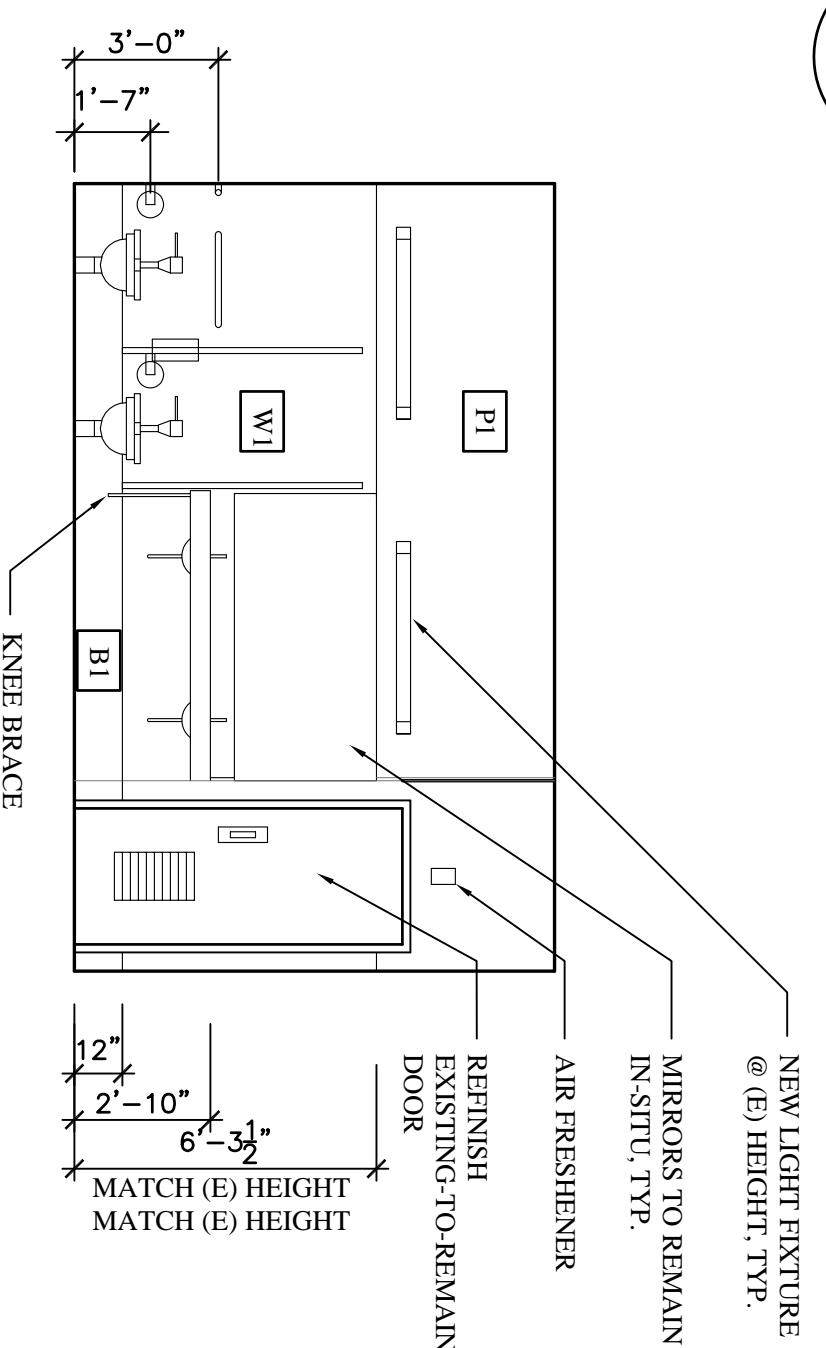
Key Plan Notes

REFER TO SHEET A2.0 FOR GENERAL PLAN NOTES.

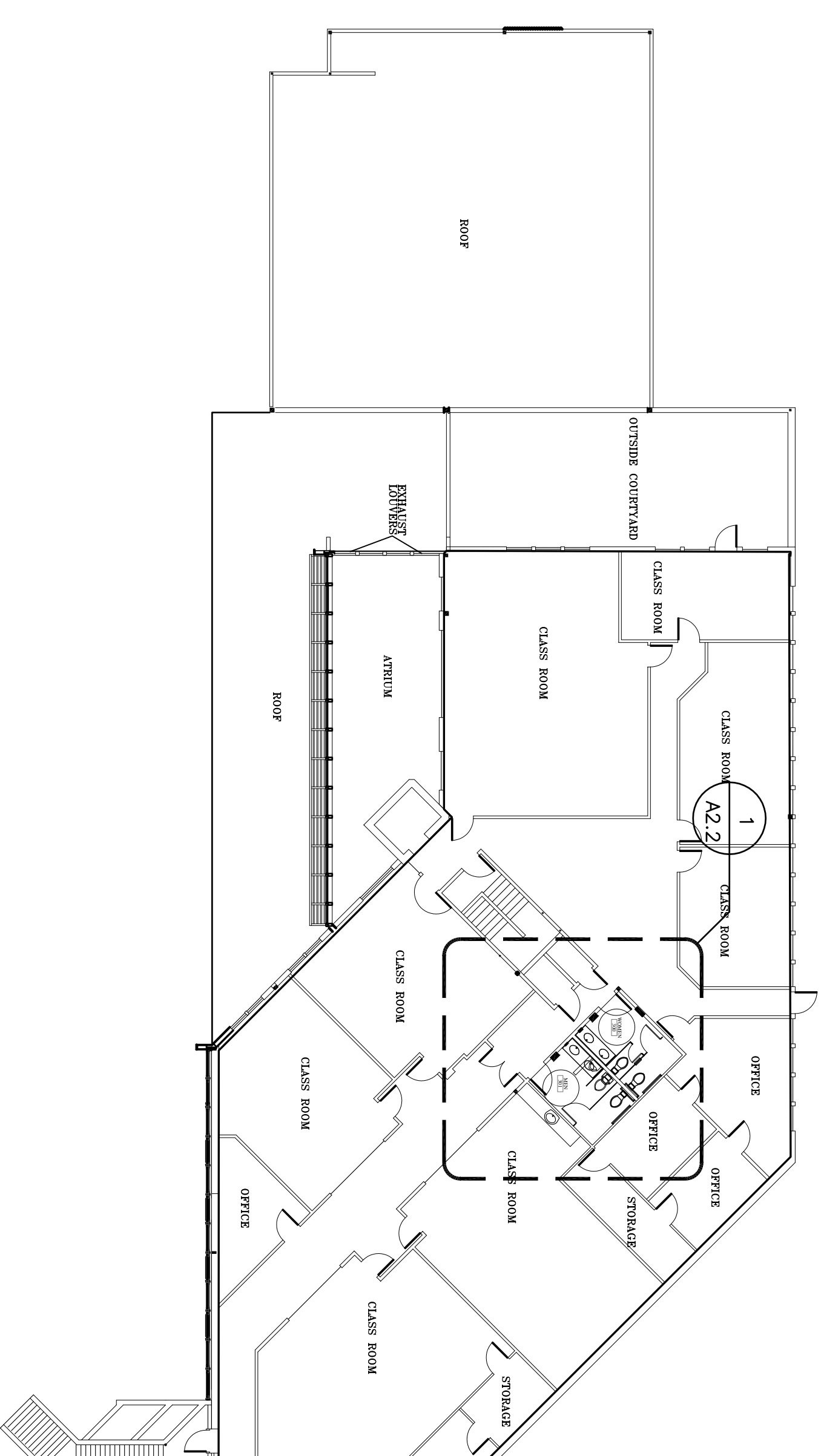
- 1 NEW COUNTER WITH A (2) SIDED BACKSPLASH PROVIDE WALL SUPPORT & ONE KNEE BRACE (AT PARTITION) WITH UNDERMOUNT SINK.
- 2 NEW TOILET PARTITIONS PER FINISH SCHEDULE. MATCH EXISTING LAYOUT.
- 3 RE-INSTALL SALVAGED GRAB BARS AT REQUIRED HEIGHT.
- 4 TOWEL DISPENSER AND WASTE RECEPTACLE PER FIXTURE SCHEDULE.
- 5 SANITARY NAPKIN/TAMPON DISPENSER INSTALLED PER ANSI A117.1.
- 6 SANITARY DISPOSAL LOCATION.
- 7 REFINISH EXISTING-TO-REMAIN DOOR.
- 8 PROVIDE AND INSTALL AUTOMATIC AIR FRESHENER OVER DOOR.



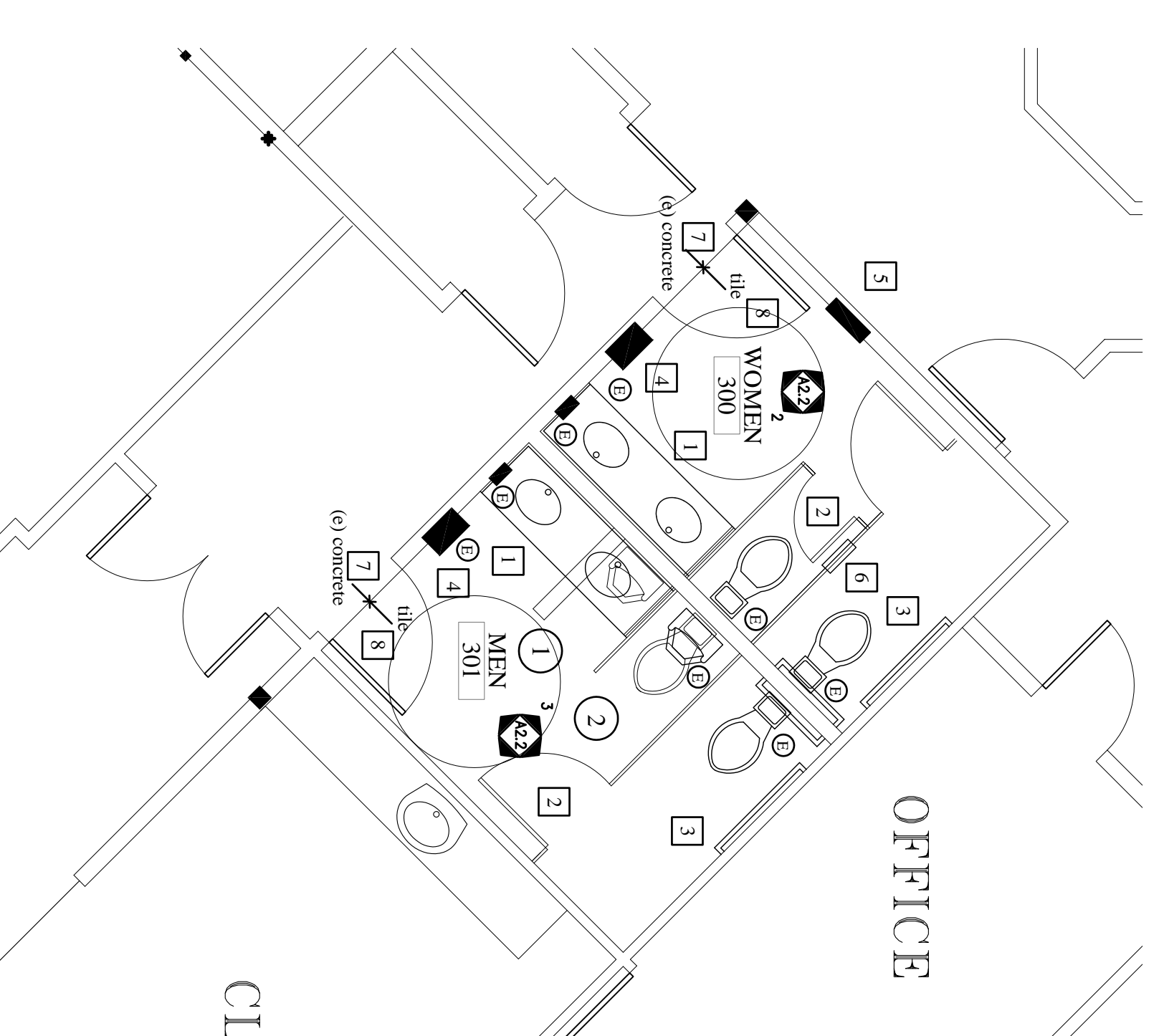
3 INTERIOR ELEVATION @ men's
1/4" = 1'-0"



2 INTERIOR ELEVATION @ women's
1/4" = 1'-0"



Key Plan :: THIRD LEVEL



1 ENLARGED PLAN @ RESTROOMS
1/4" = 1'-0"

Thira
Incorporated
Seamboat \$995
Colorado
970.871.9041 o.
970.879.1037 f.
www.thira.com

©COPYRIGHT 2008
ANY UNAUTHORIZED USE OF THESE
PLANS WITHOUT THE WRITTEN CONSENT OF THIRA INC.

CMC - GLENWOOD CENTER
PERMIT # 4476
1402 BLAKE AVENUE, GLENWOOD SPRINGS COLORADO

ISSUED	DATE
PERMIT #4476	
Addendum #2	10.01.08
DRAWN BY	CMP
CHECKED BY	CMP
PROJECT NO	0619

THIRD FLOOR PLAN
FIXTURE SCHEDULE

A2.2

